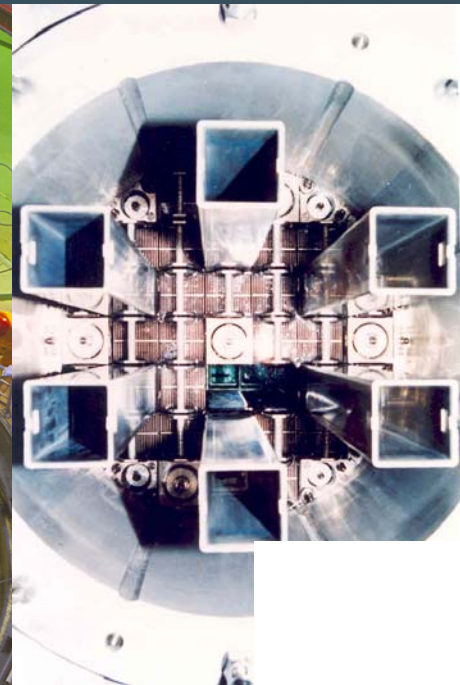
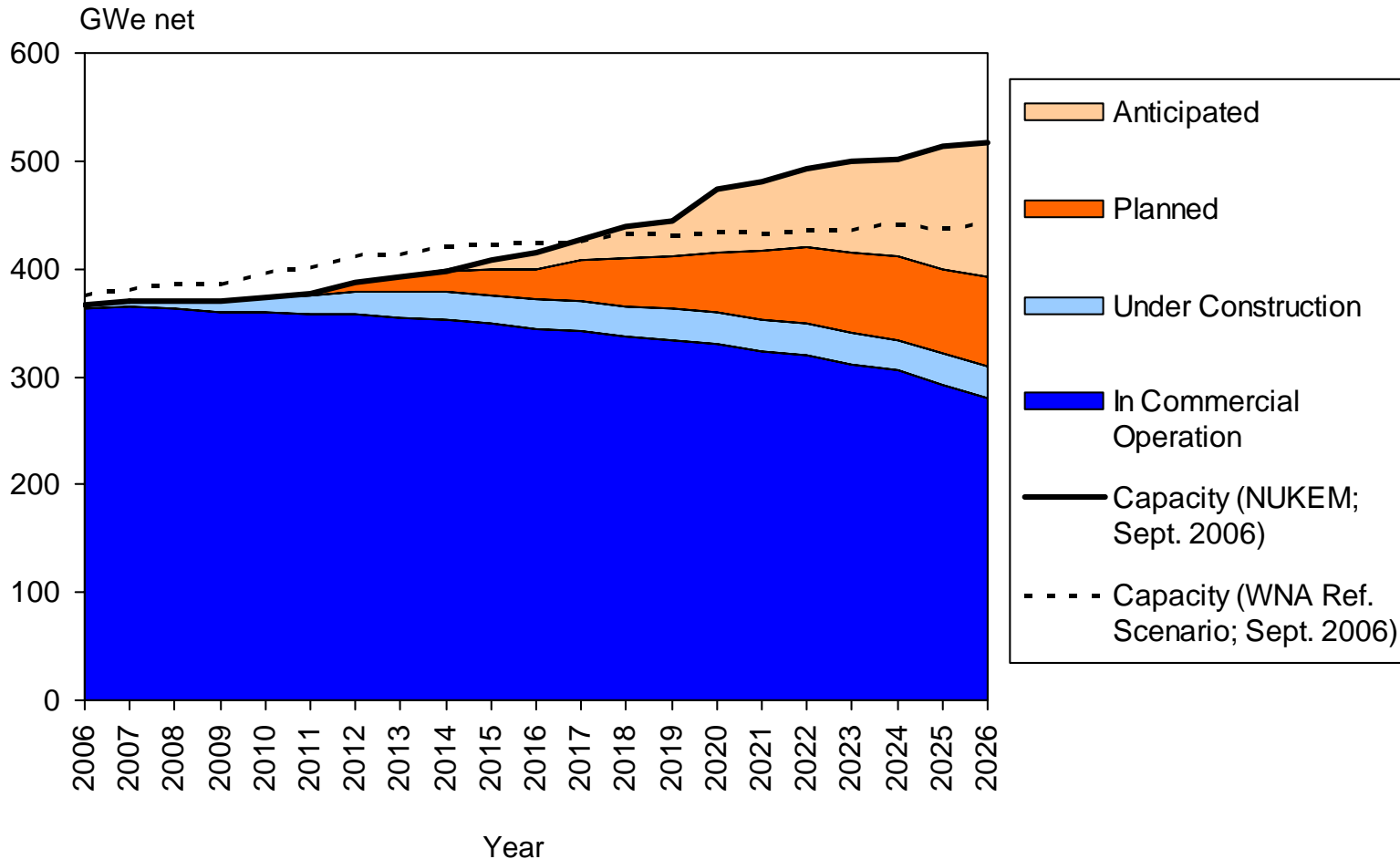


# Tightened SWU Market after 2013: Where Will the SWU Come From?

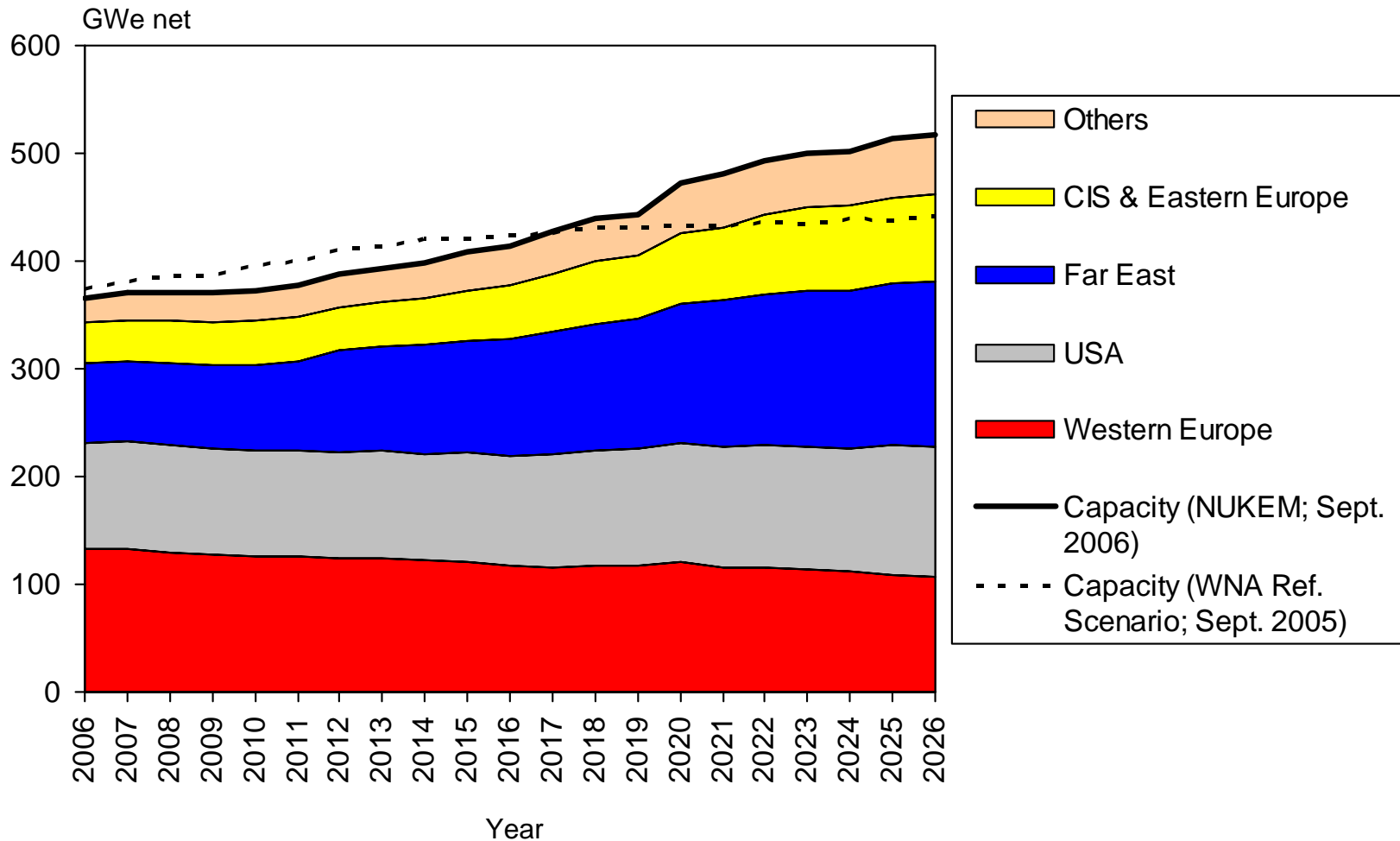
**Klaus Lohrey**  
**NUKEM GmbH**  
**Alzenau, Germany**  
**September 2006**



# World NPP Capacity by Status

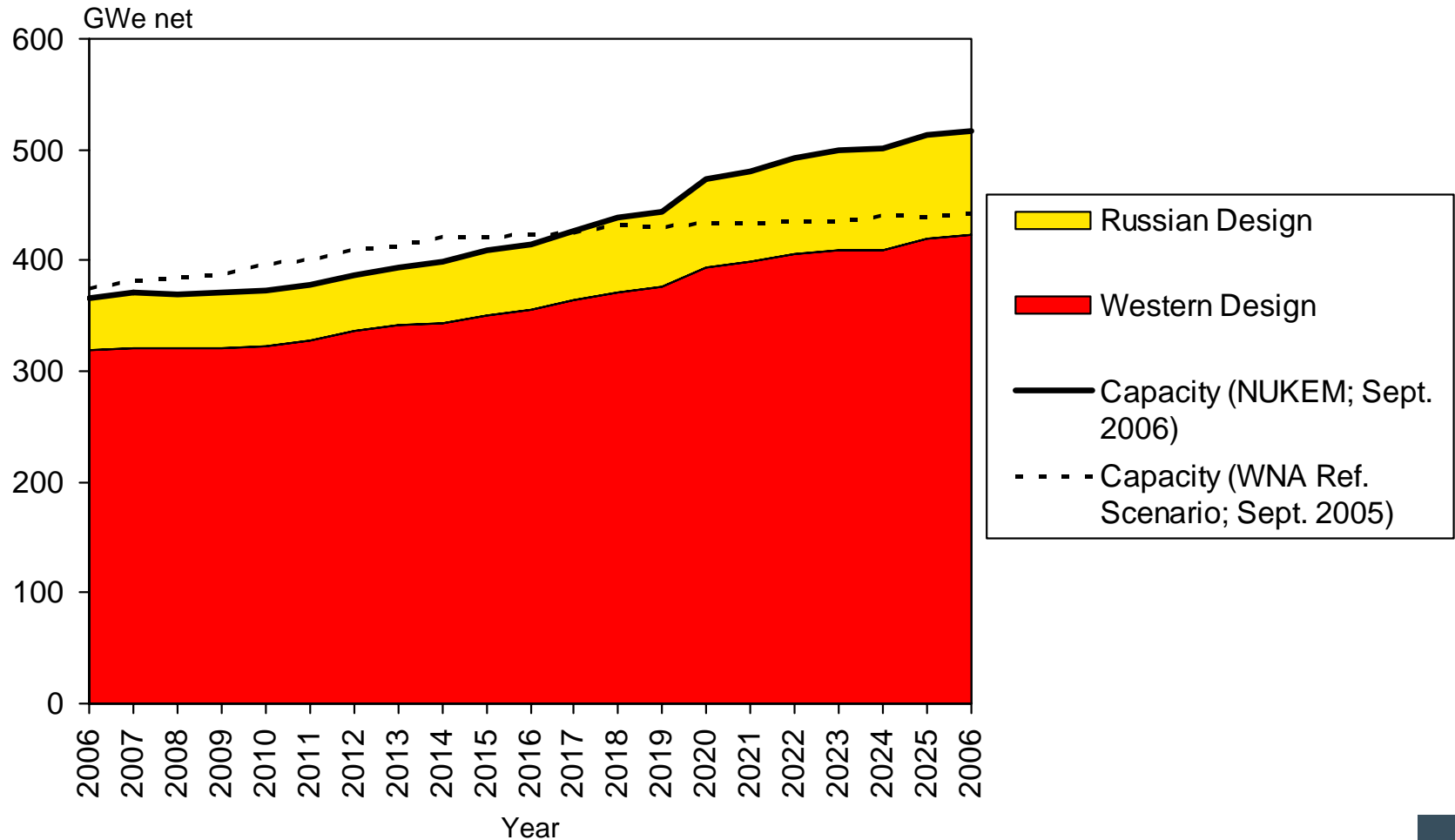


# World NPP Capacity by Region



• September 2006

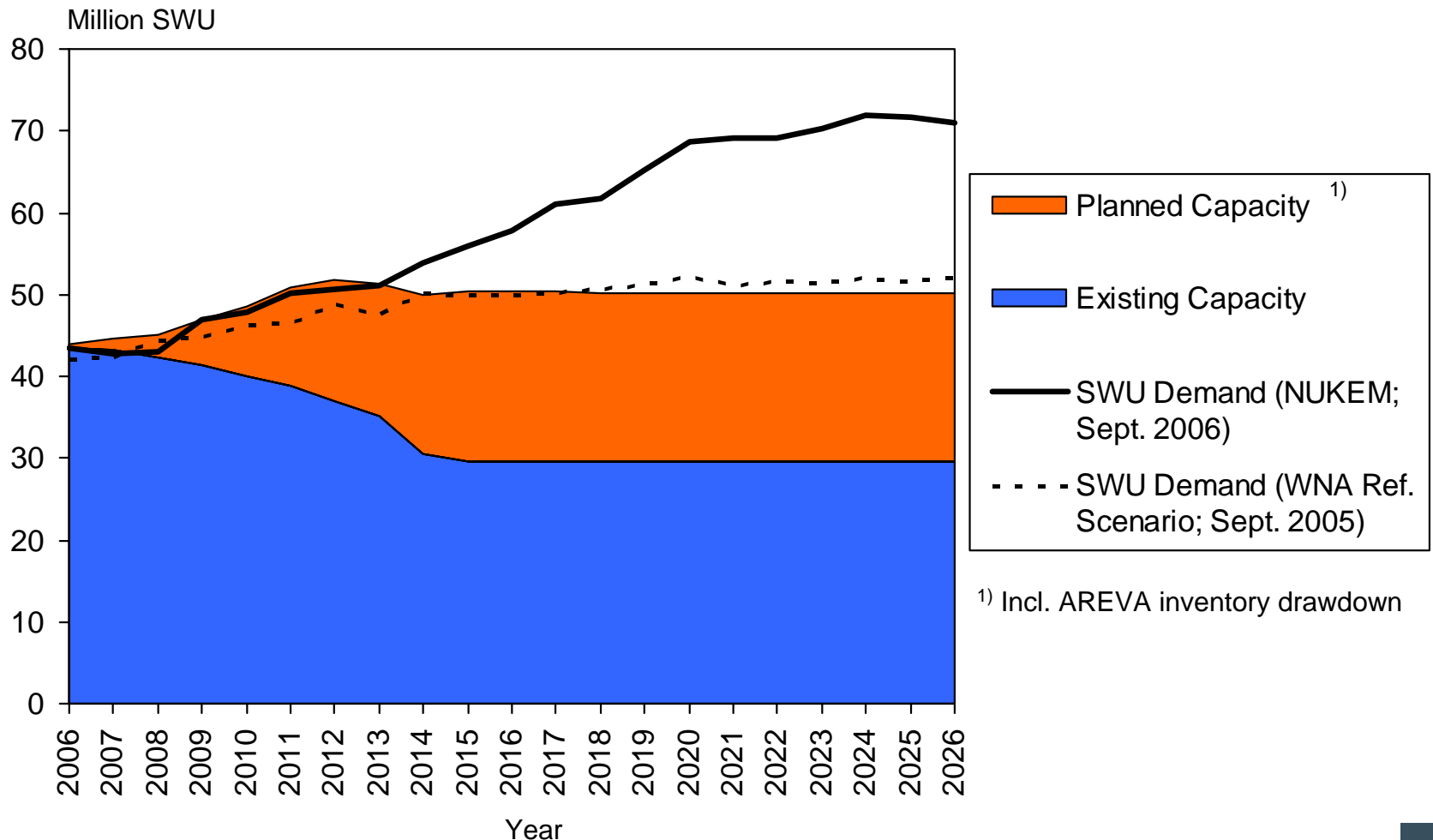
# World NPP Capacity by Reactor Design



• September 2006

# World SWU Capacity and Reactor Demand

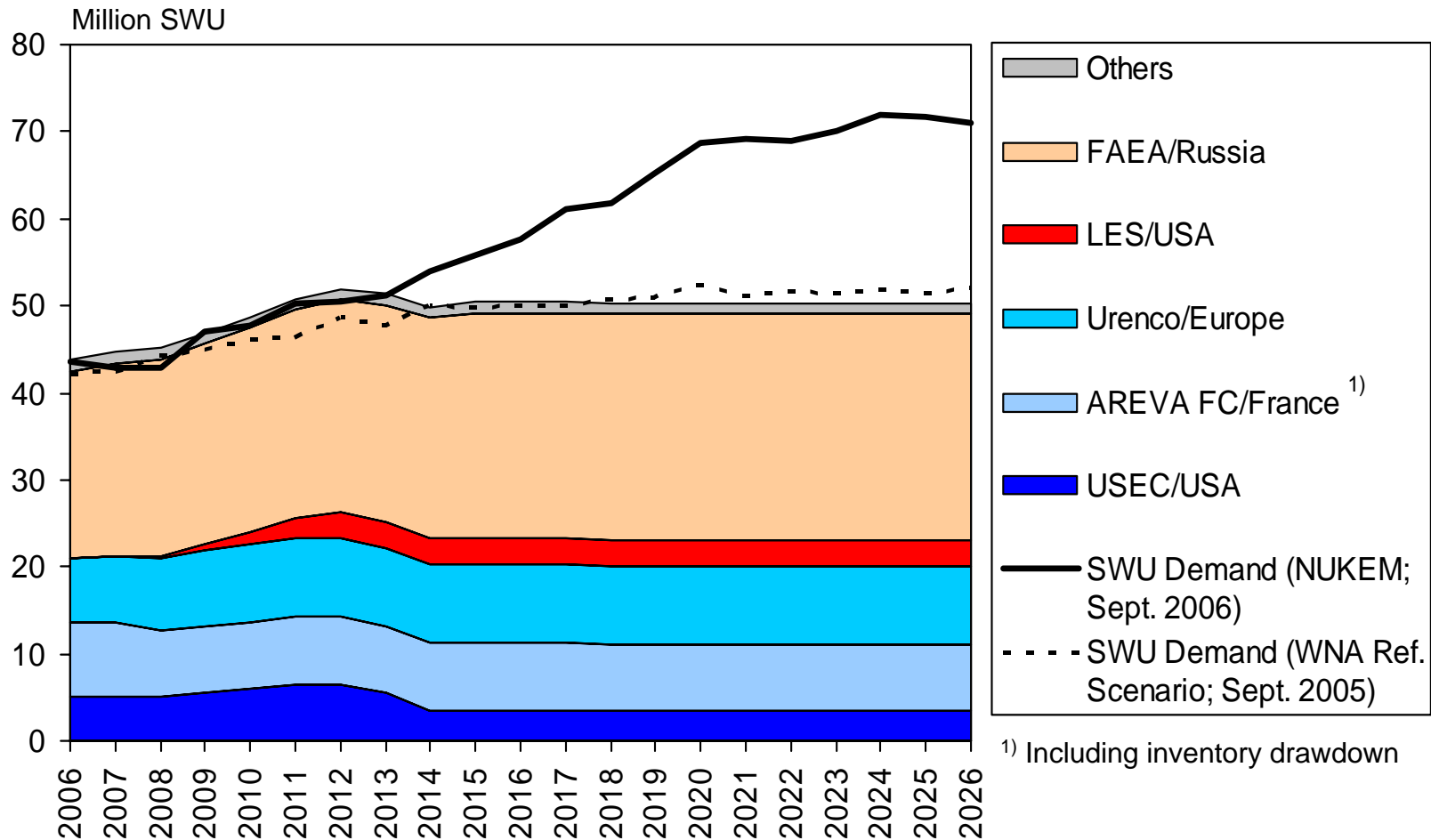
## - Existing & Planned SWU Capacity -



• September 2006

# World SWU Capacity and Reactor Demand

## - Existing & Planned SWU Capacity -

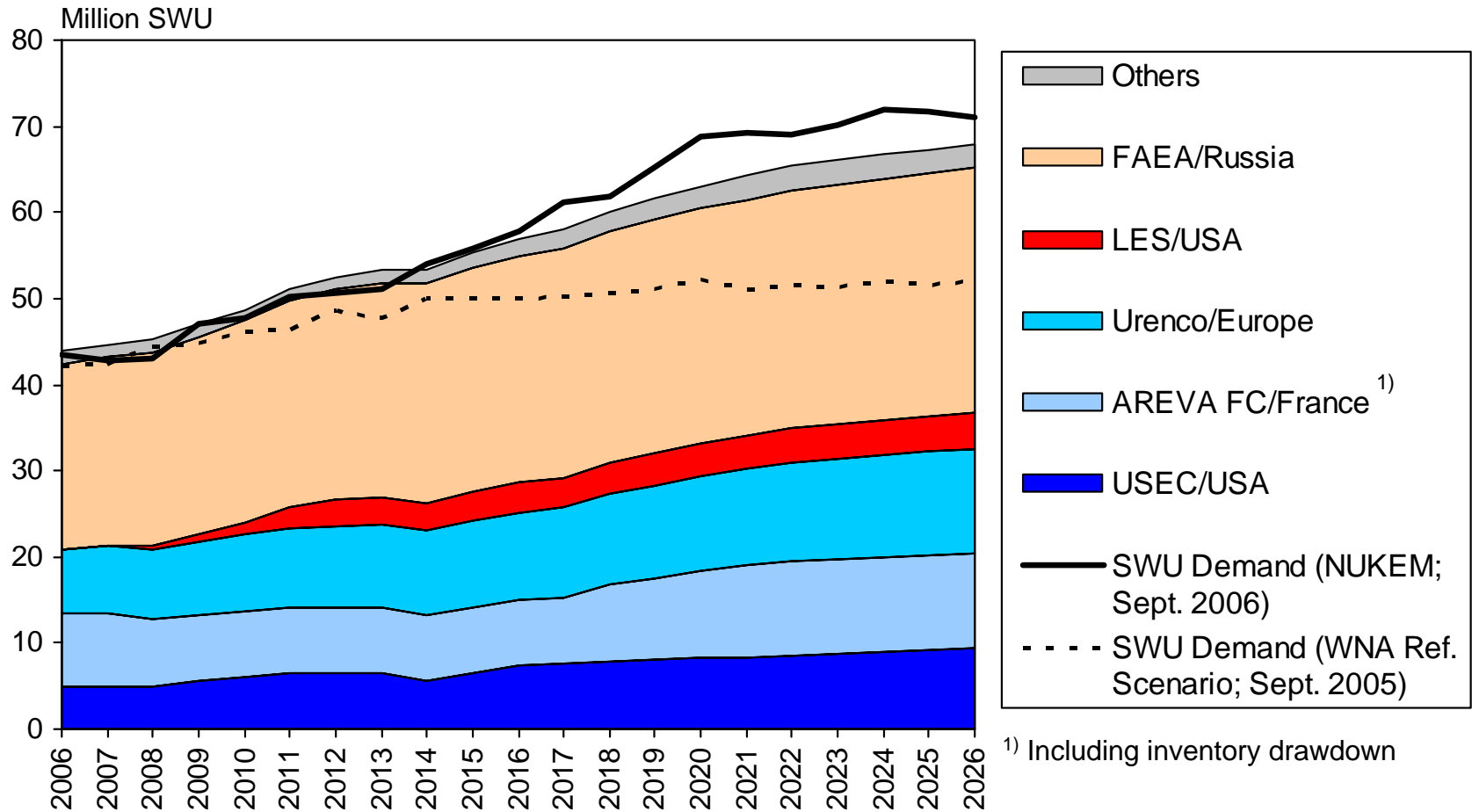


• September 2006

Year

# World SWU Capacity and Reactor Demand

- Existing, Planned & **Prospective** SWU Capacity -

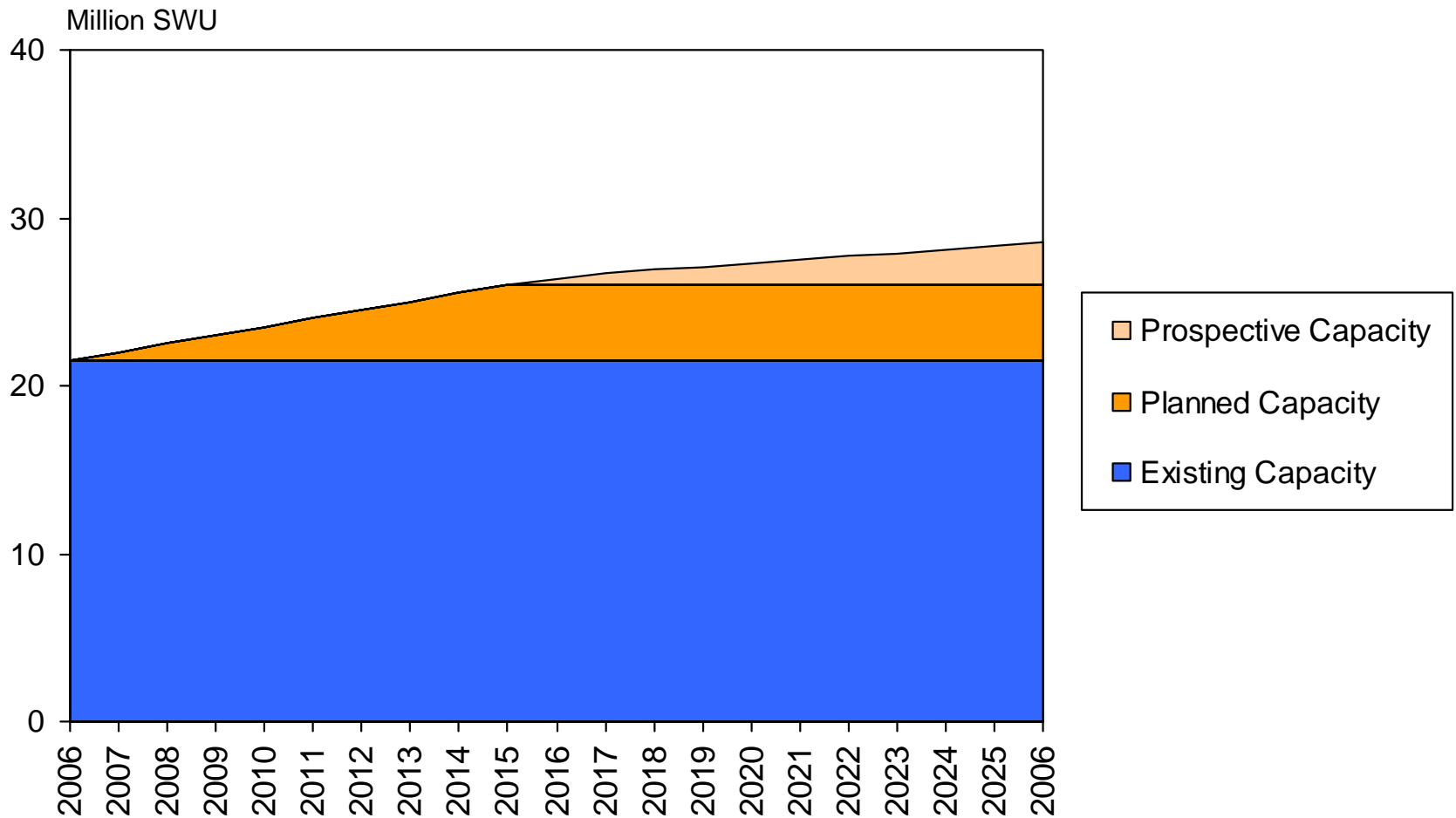


• September 2006

<sup>1)</sup> Including inventory drawdown

# Russian SWU Capacity

## - Existing, Planned and Prospective Capacity -

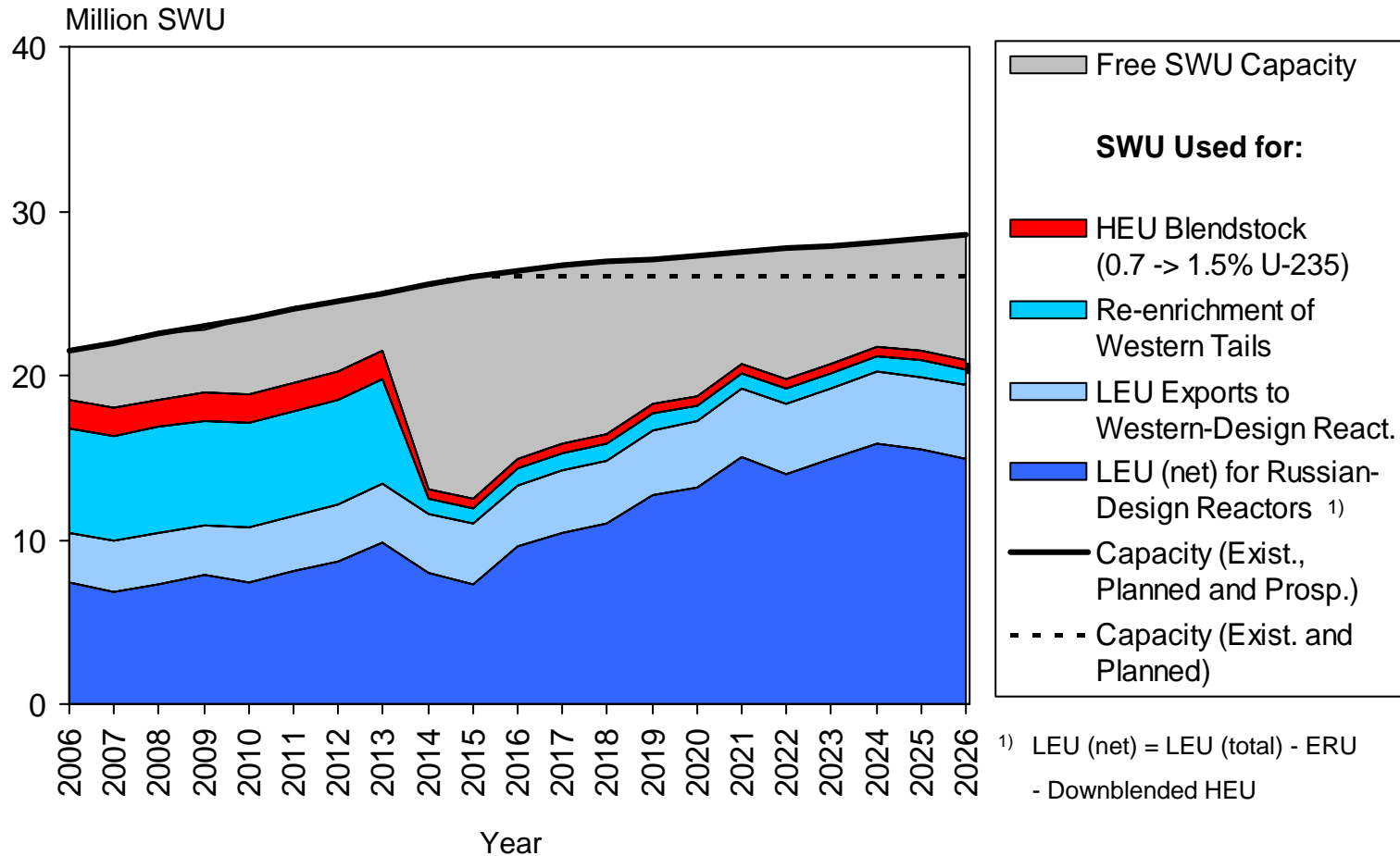


• September 2006

Year

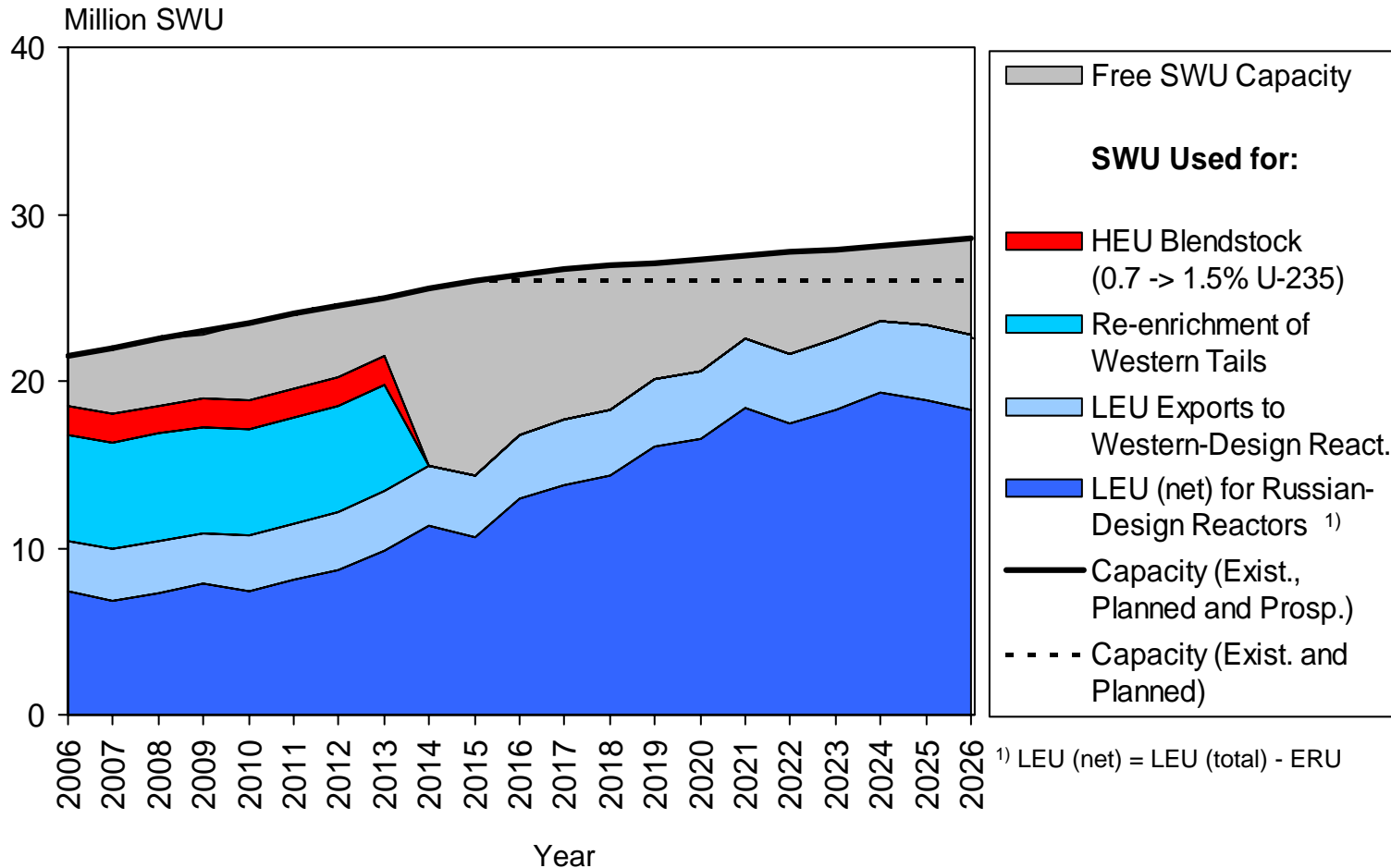
# Russian Primary SWU Portfolio

- After 2013, Re-enrichment of Tails and Blending of HEU at low Levels -

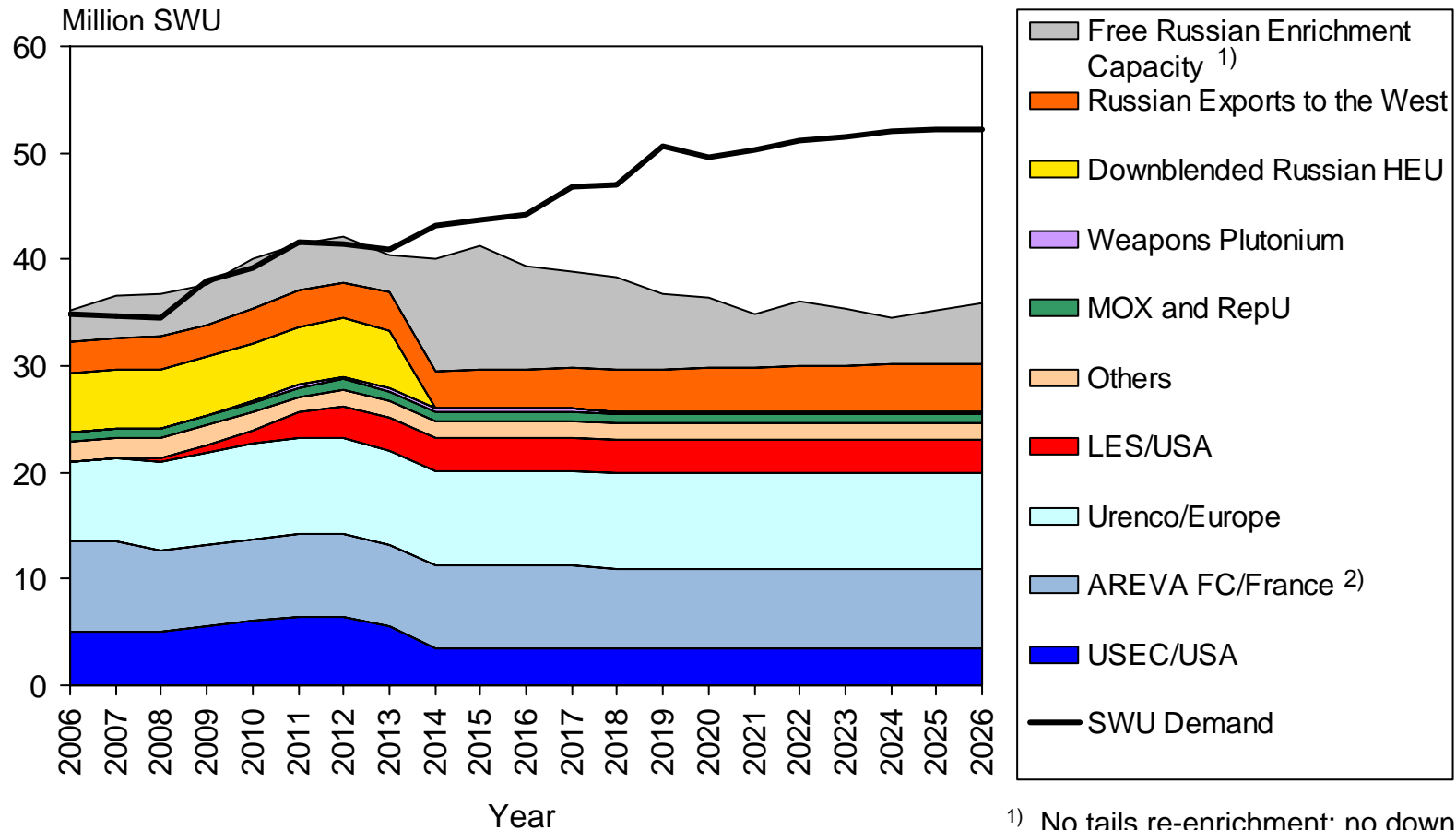


# Russian Primary SWU Portfolio

- After 2013, no Re-enrichment of Tails and/or Blending of HEU -

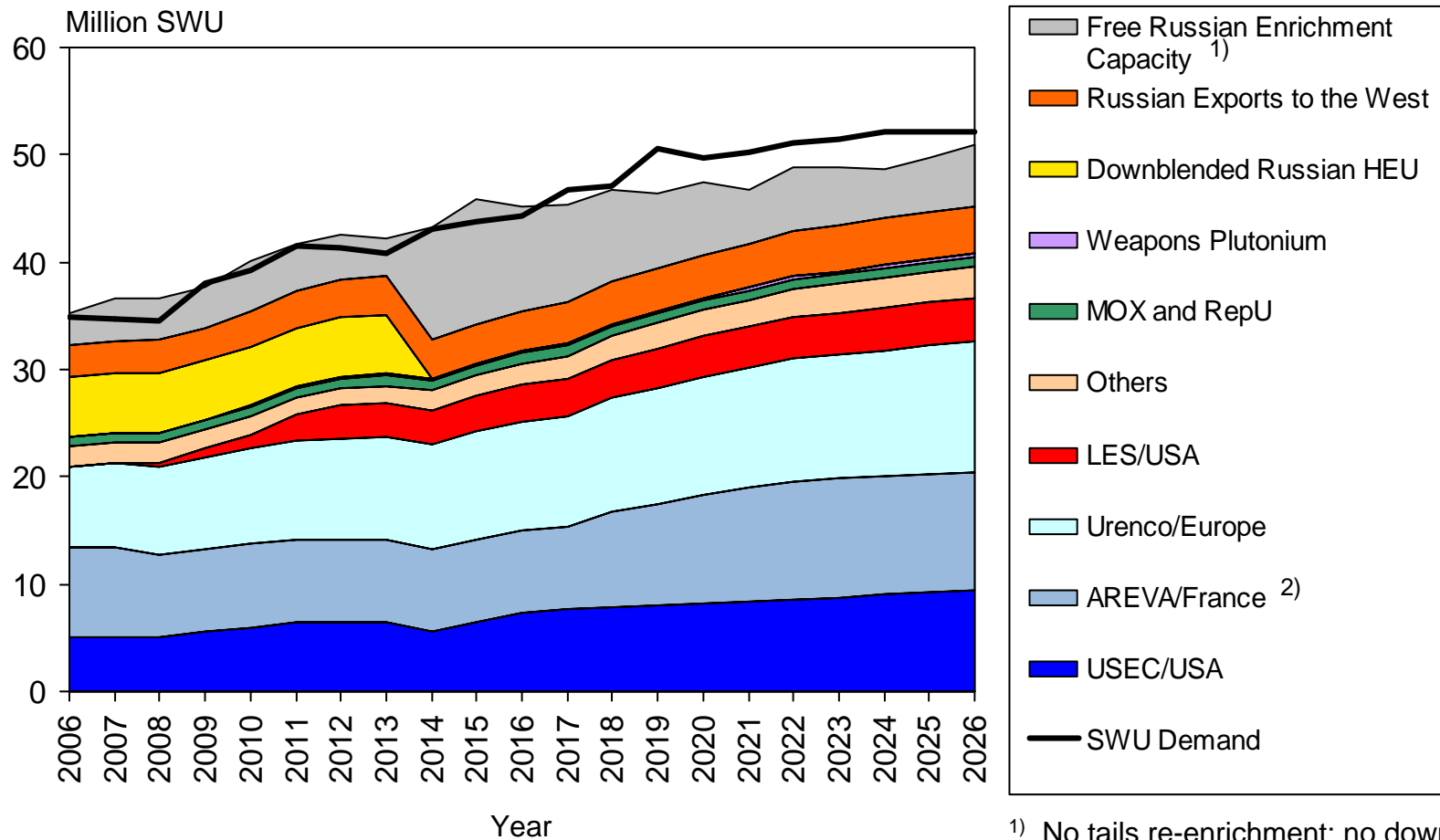


# Western-Design Reactors SWU Supply and Demand - Existing & Planned SWU Capacity -



1) No tails re-enrichment; no downblending of HEU  
 2) Including inventory drawdown

# Western-Design Reactors SWU Supply and Demand - Existing, Planned & Prospective SWU Capacity -

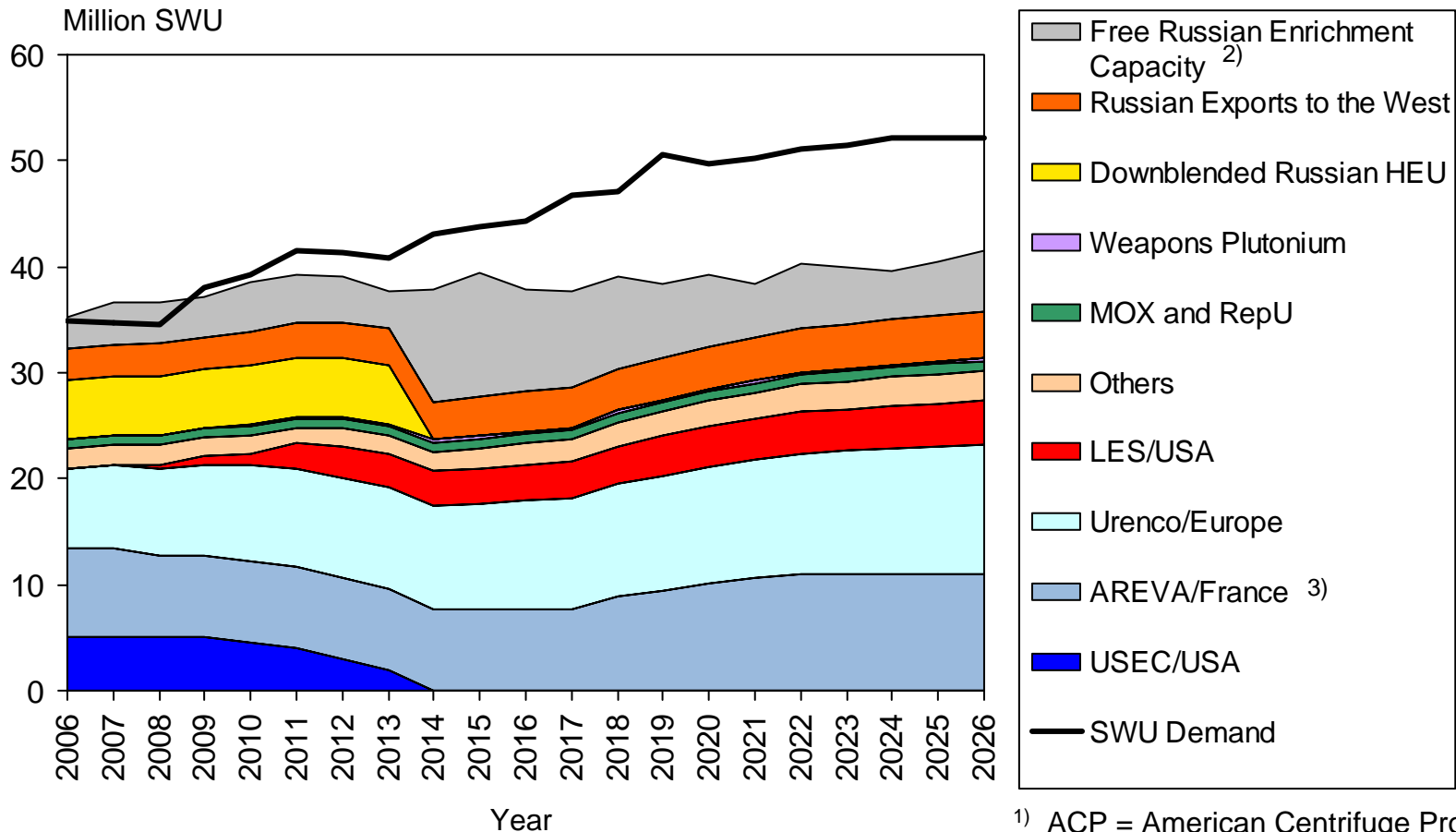


• September 2006

<sup>1)</sup> No tails re-enrichment; no downblending of HEU

<sup>2)</sup> Including inventory drawdown

# Western-Design Reactors SWU Supply and Demand – Exist., Planned & Prosp. SWU Capacity; **No ACP** <sup>1)</sup>



• September 2006

- 1) ACP = American Centrifuge Program
- 2) No tails re-enrichment; no downblending of HEU
- 3) Including inventory drawdown